



MEET JTRIBE

IMPACT REPORT

a project of
CHABAD AT UT



TAKE A LOOK AT FOUR STUDENTS:



Daniel

does his
own thing
kinda guy



Nina

sorority
party
girl



Benji

never
been Bar
Mitzvah'd



Adina

Jewish
day school
kid

Each one is so unique.

How can we cater to all of their needs?

MEET JTRIBE.
**FRIENDSHIP
CONNECTION
COMMUNITY**

JTRIBE IS

FRIENDSHIP.



Axe throwing was a first for many at JTribe's kick-off event



JTribe members geared up to volunteer for the homeless



Nothing like completing an escape room with friends!

Daniel isn't involved in Greek life, and Nina is in a non-Jewish sorority; sometimes, they just want to hang out with Jewish friends. They are just two of many students on campus who don't have access to a Jewish social club. JTribe is here for them.

JTribe is a place where students like Daniel and Nina can make friendships with fellow Jewish students.

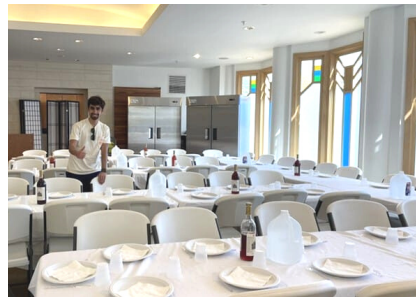
JTRIBE IS

CONNECTION.

Lighting the
shamash
at Chabad's public
menorah lighting



Setting up for
JTribes Shabbat



Kosher
scavenger hunt
at the grocery
store



Benji's first time making Challah was when he came to help cook for JTribes Shabbat. It hit him that he never got a chance to explore his Jewish identity, and he set up weekly learning sessions so he could learn more.

JTribes gives students like Benji the opportunity to connect to Judaism in a non-pressured environment.

JTRIBE IS

COMMUNITY.



Making PB&J sandwiches for the homeless



Delivering homemade challah to Jewish senior residents



Meeting lawyer Adam Loewy after he shared his story at a JTribe networking event

Adina would consider herself empowered in her Judaism. She wants to take initiative and pay it forward. JTribe offers her the opportunity to be a giver, and connects her to the larger Jewish community in Austin.

At JTribe, students like Adina get the chance to give back to the community.

DANIEL, NINA, BENJI & ADINA ARE JTRIBE INTERNS.

JTribe members are part of an internship program.

The members receive experiences that engage with the community, enrich their connection to Judaism, and encourage them to take leadership.



End-of-year Board appreciation brunch



President, Jewish Chair and Networking Chair prepare for their first event

CURRENT IMPACT



26

Intern
Leadership
Positions



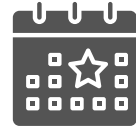
5

Executive
Board
Members



26

Weekly
Board
Meetings



15

Events

UPCOMING GOALS

Empower students to become Jewish leaders by offering a larger variety of leadership opportunities.

Launch Mental Health Safe Talk Ambassadors, an initiative to provide peer-to-peer mentoring within each social club and fraternity on campus.



Train JTribe
Members
in Mental
Health



Establish
Safe Talk
Ambassadors in
6 Social Clubs
on Campus



Annual
Student
Leadership
Conferences



Create 45
Additional
Student
Leadership
Opportunities

Each individual has the capacity to build communities and endow [them] with life... so that every community member becomes a source of inspiration.

- *the Lubavitcher Rebbe*

We know how important the future of the Jewish people is to you.

Through being in leadership positions, students understand and appreciate their ability to have an impact in ensuring Jewish continuity and making the world a better place.

Now, more than ever, it is vital that Jewish college students have these opportunities.

TURN DANIEL, NINA,
BENJI & ADINA INTO THE
LEADERS OF TOMORROW.

BUDGET BREAKDOWN

Interns <i>25 Interns</i>	\$12,500
Speakers & Mentors	\$10,000
Programming & Events	\$30,000
Mental Health Embassadors Programming & Training	\$10,000
JTribe Shabbatons	\$10,000
Student Leadership Conferences <i>Safe Talk, JHP, Pegisha</i>	\$30,000
Promotional Materials	\$1,500
Staff	\$40,000
TOTAL	\$144,000

YOUR PARTNERSHIP MEANS THE
WORLD TO JEWISH LONGHORNS.

THE ROHR CHABAD JEWISH STUDENT CENTER AT UT
WWW.JEWISHLONGHORNS.COM | 512.477.7770 | @CHABAD_AT_UT